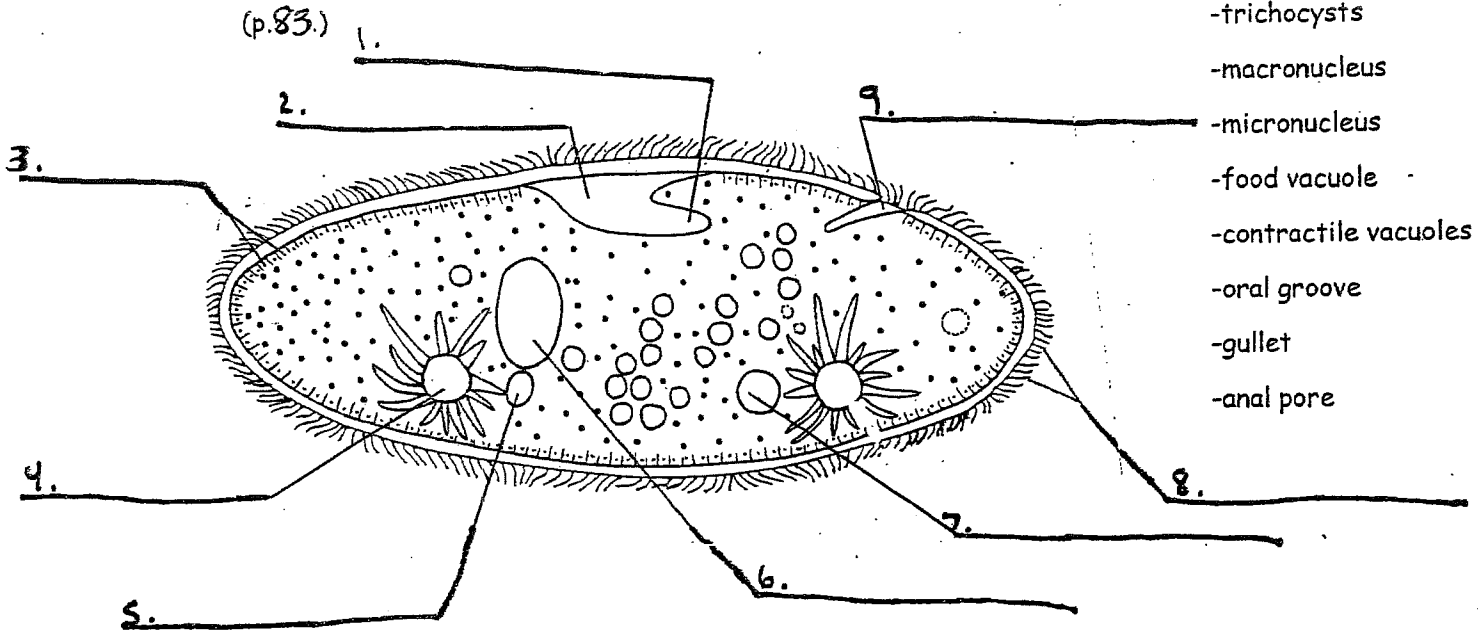


Labeling Protist Pictures

Label the pictures using the word bank provided. Then fill in the chart with the function of each structure.

Paramecium:

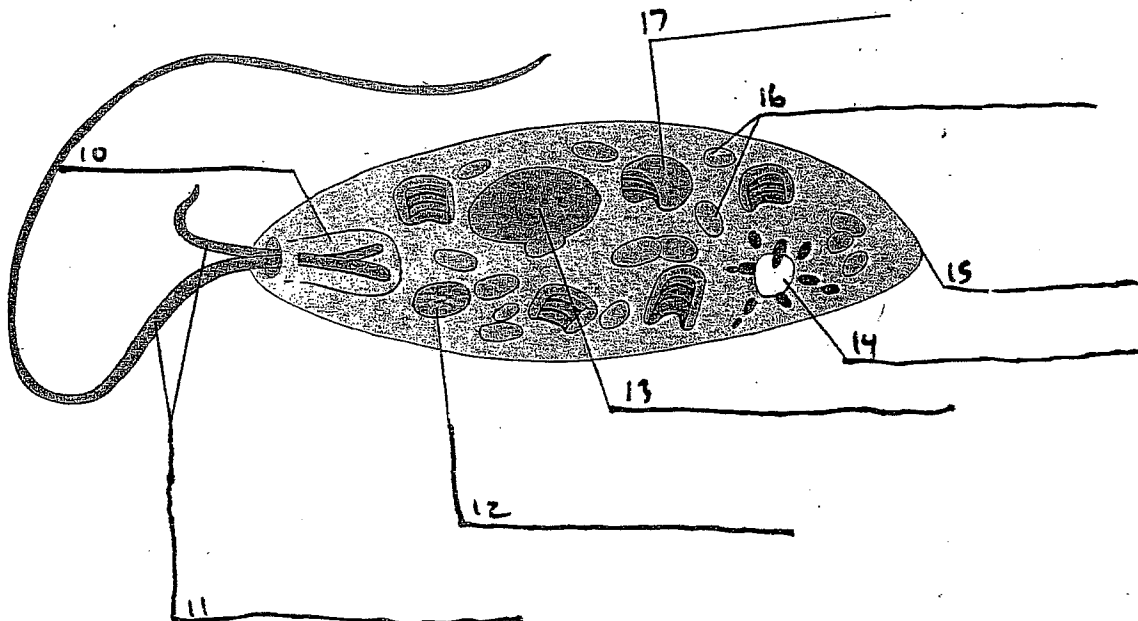
(p. 83.)



- cilia
- trichocysts
- macronucleus
- micronucleus
- food vacuole
- contractile vacuoles
- oral groove
- gullet
- anal pore

Euglena:

(p. 87)



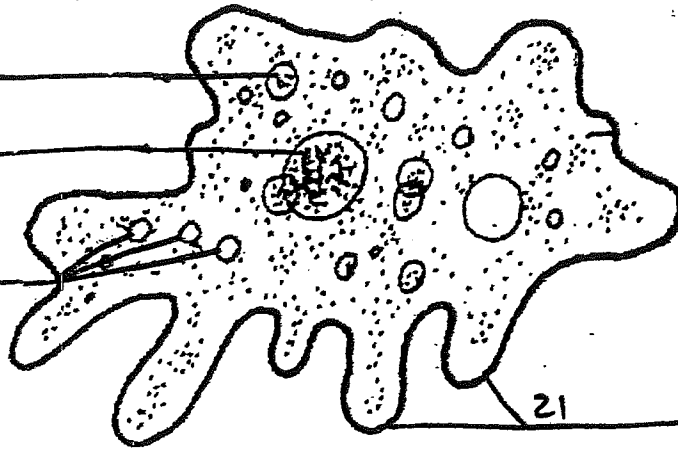
- contractile vacuole
- flagella
- eyespot
- gullet
- chloroplast
- carbohydrate storage bodies
- nucleus
- pellicle

Amoeba:

(p. 82) 18.

19.

20



-contractile vacuole

-pseudopods

-nucleus

-food vacuole

21

STRUCTURE	FUNCTION
Cilia	
Trichocysts	
Macronucleus	
Micronucleus	
Food Vacuole	
Contractile Vacuole	
Oral Groove	
Gullet	
Anal Pore	
Pseudopods	
Nucleus	
Flagella	
Eyespot	
Chloroplast	
Carb. Storage	
Pellicle	